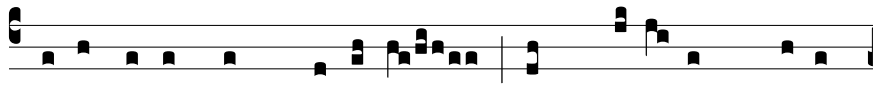


S



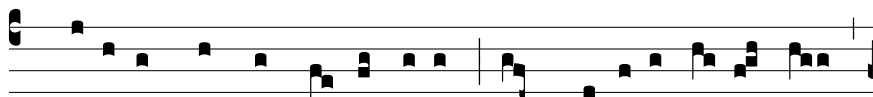
Anctís-simus namque Gregó-ri- us cum pre-ces



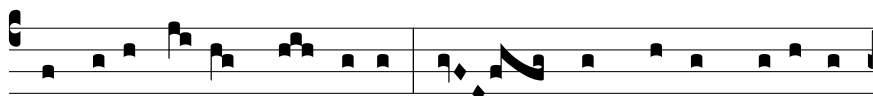
effúnde-ret ad Dómi-num ut mú-si-cum donum



e- i dé-super in carmí-ni-bus de-dísset, tunc descéndit



Spí-ri-tus Sanctus su-per e-um, in spé-ci-e co-lúmbæ,



et ilustrá-vit cor e-jus, et sic demum exórtus



est cáne-re, i-ta di-céndo: Ad te leva-vi.