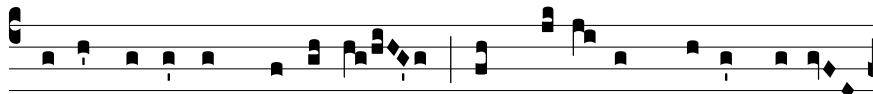


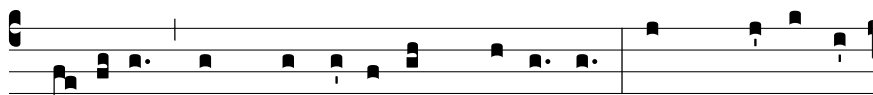
S



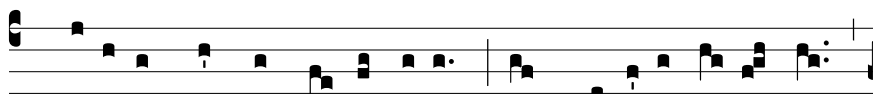
Anc-tis-simus \* namque Gregó-ri- us cum pre-ces



effúnde-ret ad Dómi-num ut mú-si-cum donum e- i



dé-super in carmí-ni-bus de-dís-set, tunc descéndit



Spí-ri-tus Sanctus su-per e-um, in spé-ci-e co-lúmbæ,



et illustrá-vit cor e-jus, et sic demum exórtus



est cáne-re, i-ta di-céndo: Ad te leva-vi.